

Angeles

Kevin Good

Notes

The melody is played entirely in unison. Upon arriving on any note, an individual may choose to sustain that note for any length of time.

Sustained notes should always be softer than the melody. Players sustaining notes should rejoin the melody whenever they choose to.

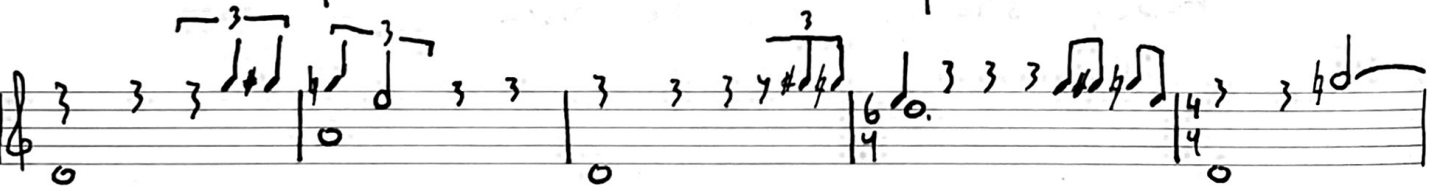
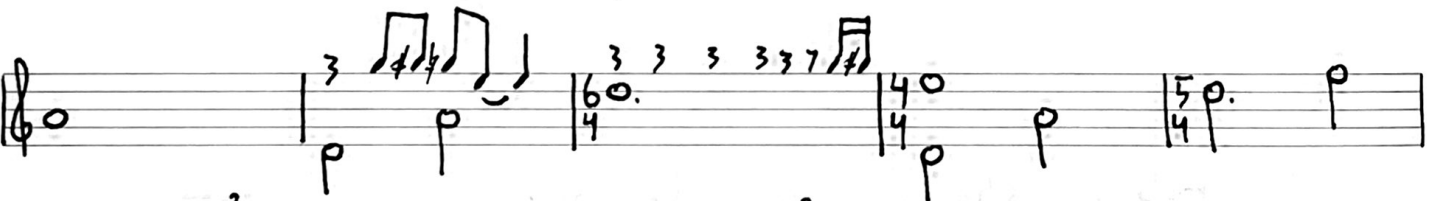
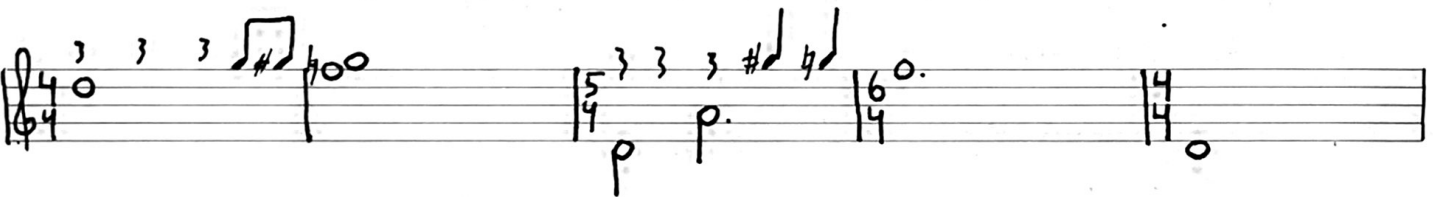
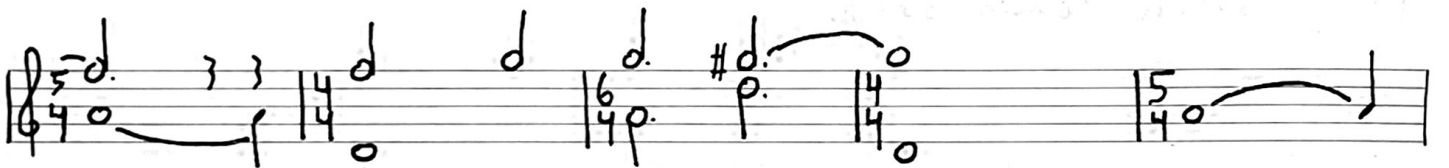
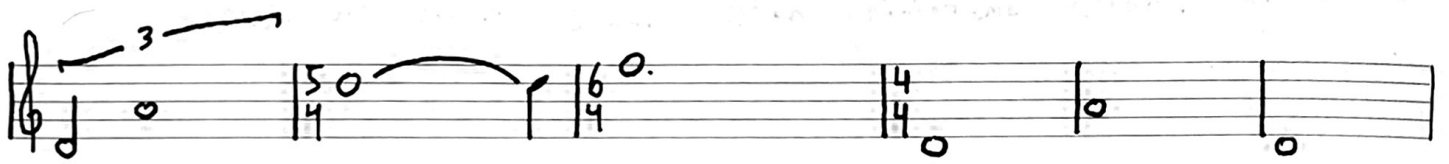
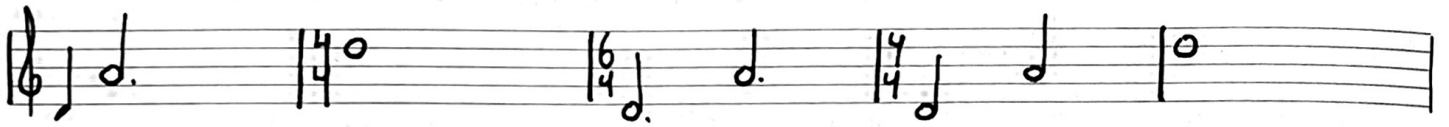
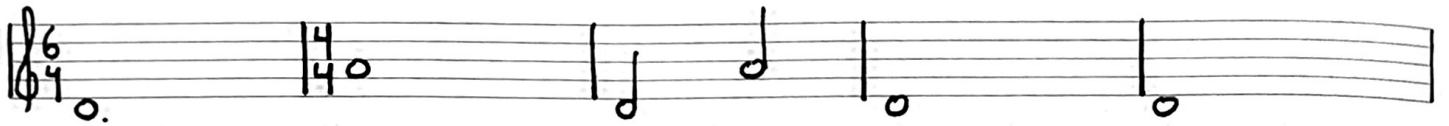
Octaves may be transposed.

Dynamics are determined by the ensemble but generally should remain soft.

Players may also choose to stop playing and listen to the melody. They may return to playing the melody whenever they choose to.

The melody should always be heard

$\text{♩} = 60$

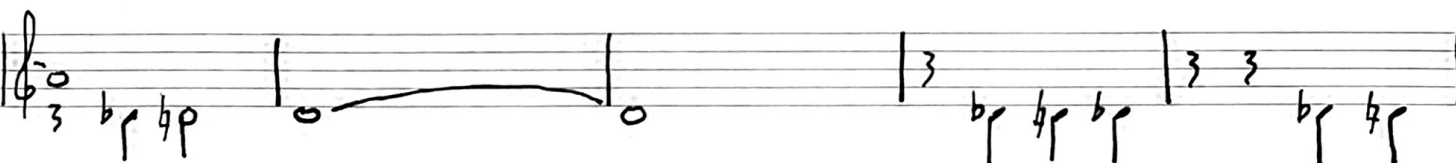
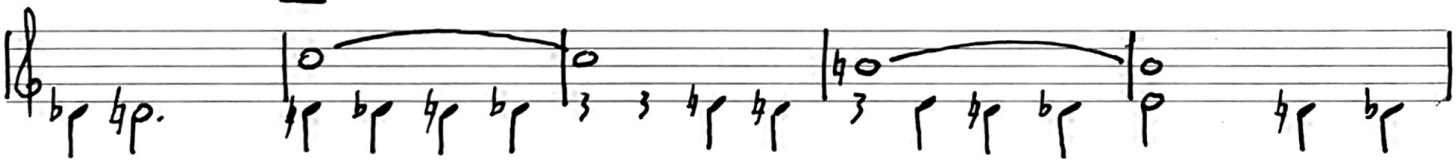


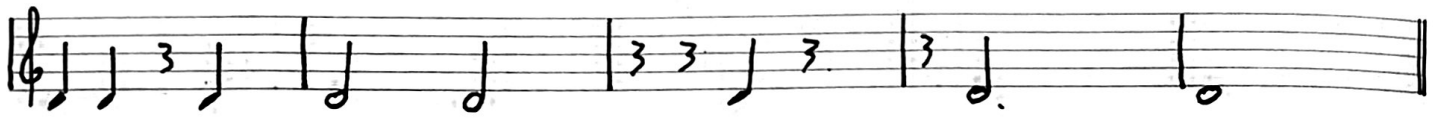
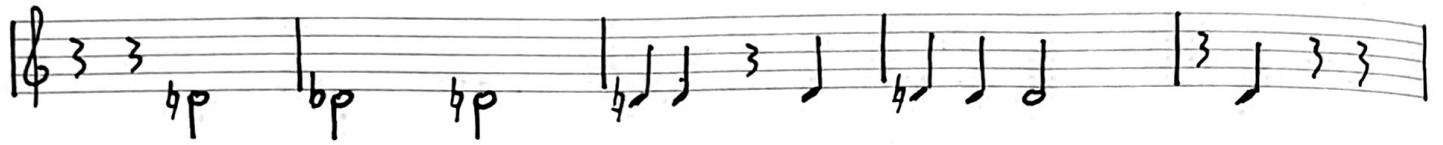


□



□





8/26/24

