



FIELD NOTES®

Joshua Tree National Park Memo Book
48 Pages / Made in the U.S.A.

THIS FIELD NOTES MEMO BOOK IS PROPERTY OF:

OFFICIAL NATIONAL PARK PASSPORT STAMP:

FOR INTERNAL RECORDS:

Start Date:

--- 20 /

Location:

Completion Date:

--- 20 /

Location:

IN THE EVENT OF MISPLACEMENT:

IF FOUND, PLEASE CONTACT:

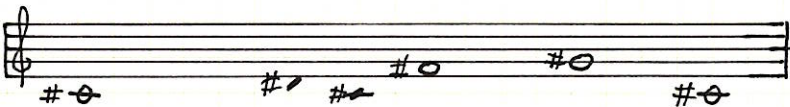
Printed Address:

----- © -----

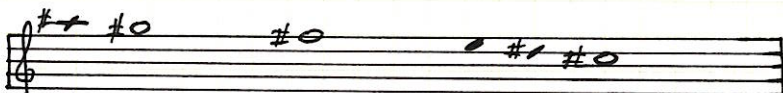
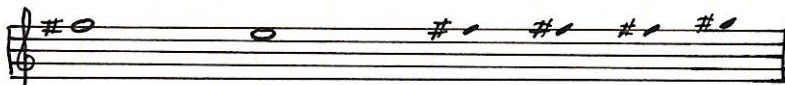
HENCE, THERE IS A HANDSOME REWARD WAITING.

ISN'T

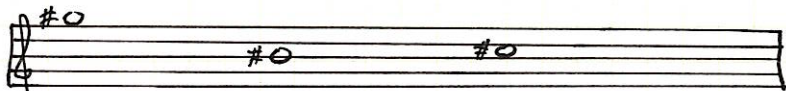
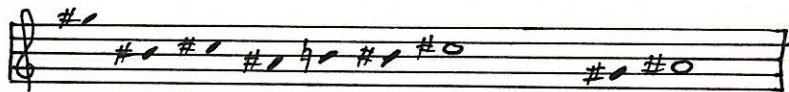
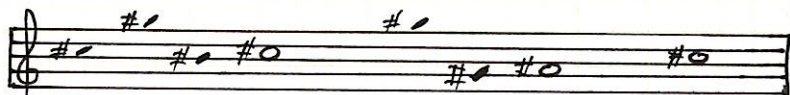
Skull Rock Nature Trail
10/12/24



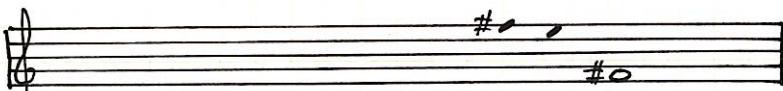
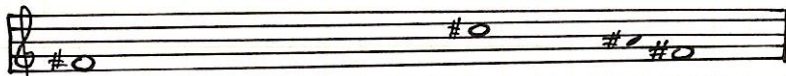
Skull Rock Discovery Trail
10/12/24



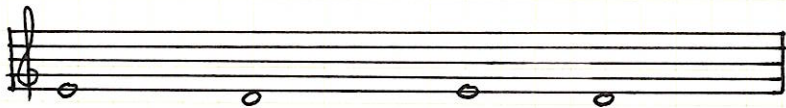
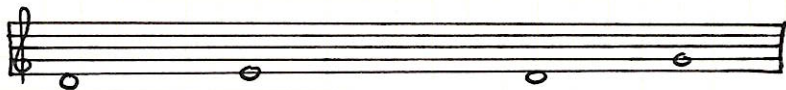
Covington Crest Trail



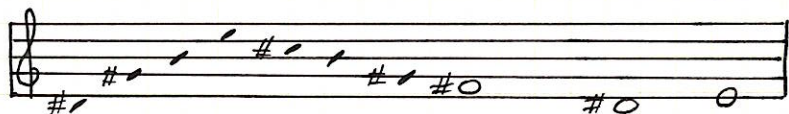
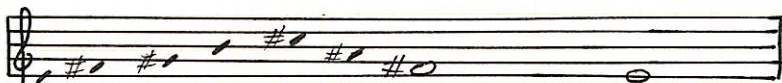
Big Trees Trail



Contact Mine Trail



West Side lag trail

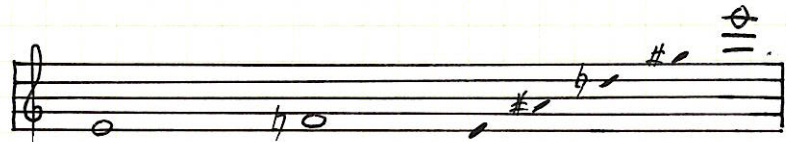
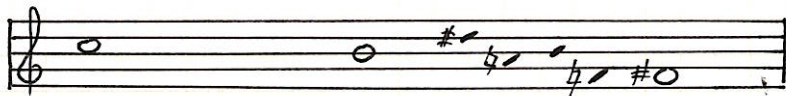
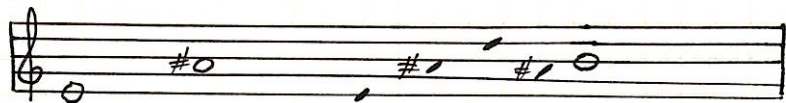


Panorama Loop Trail

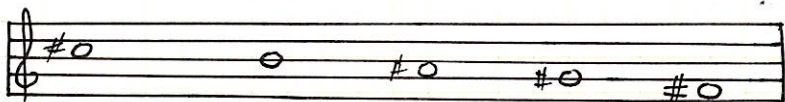
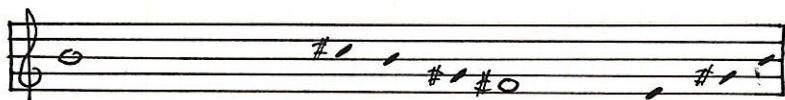
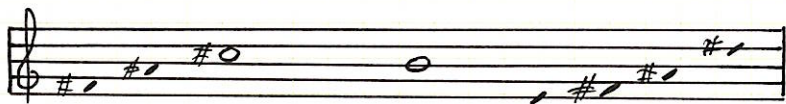
Handwritten musical notation on three staves, each starting with a treble clef. The notes are as follows:

- Staff 1: G₂, A₂, B₂, C₃, D₃, E₃, F₃, G₃
- Staff 2: A₂, B₂, C₃, D₃, E₃, F₃, G₃, A₃
- Staff 3: B₂, C₃, D₃, E₃, F₃, G₃, A₃, B₃

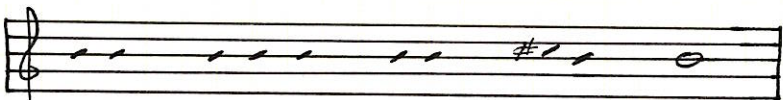
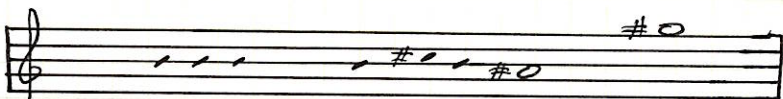
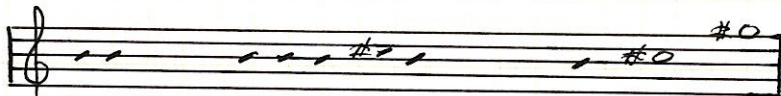
Mastodon Peak Trail



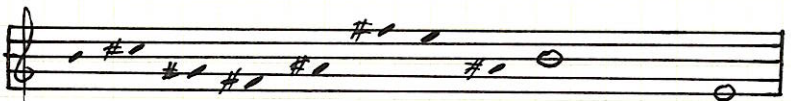
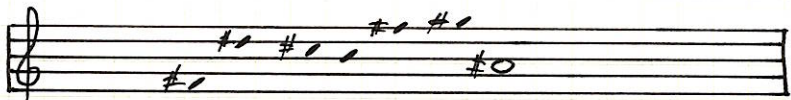
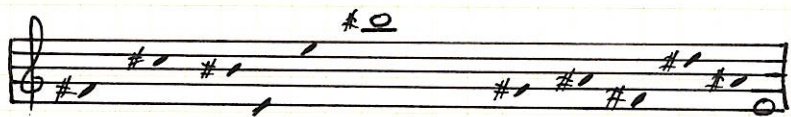
Boy Scout Trail



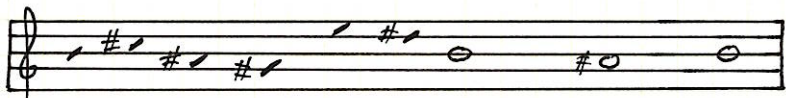
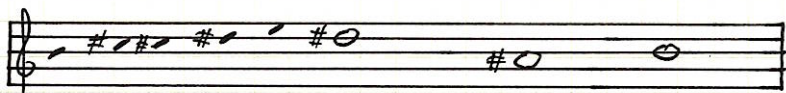
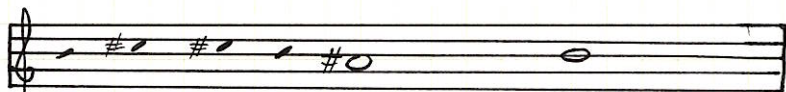
Utah Trail



Yucca Trail



Geology Tour Road

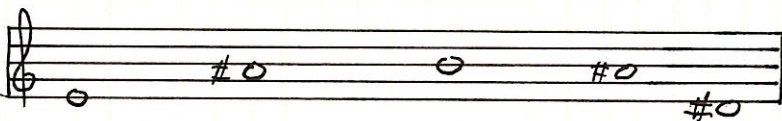


Last Horse Mine

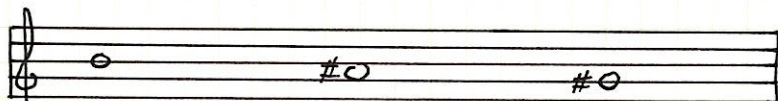
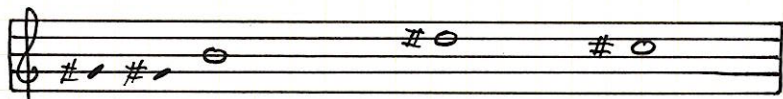
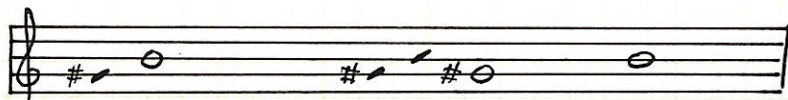
Handwritten musical notation for the piece "Last Horse Mine". The notation is written on three staves, each with a treble clef. The notes are as follows:

- Staff 1: A whole note on the first line (F4), a whole note on the second line (G4), and a whole note on the second space (A4) with a sharp sign (#).
- Staff 2: A whole note on the first line (F4), a whole note on the second space (A4), and a whole note on the second space (A4) with a sharp sign (#).
- Staff 3: A whole note on the first space (E4), a whole note on the second line (G4), a whole note on the second space (A4), and a whole note on the second space (A4).

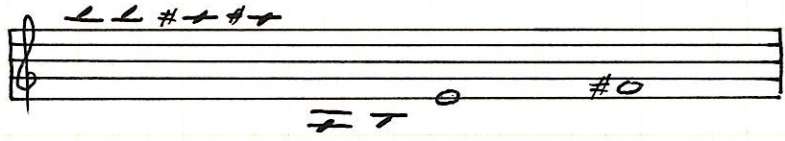
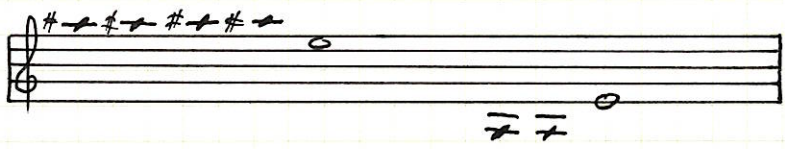
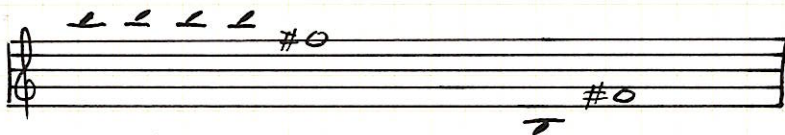
White Tank



Quail Springs

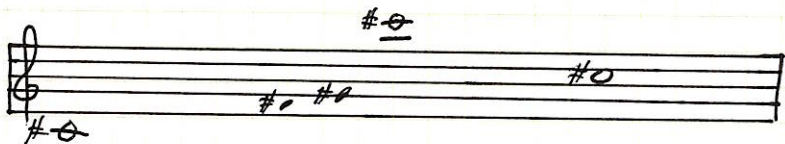
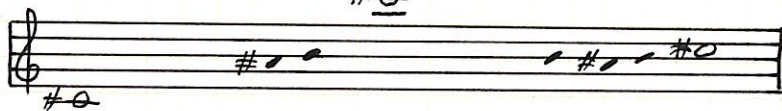


Twin Tanks

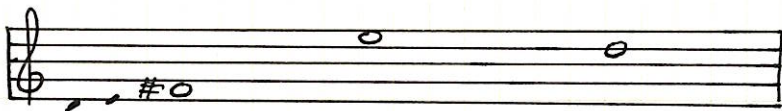
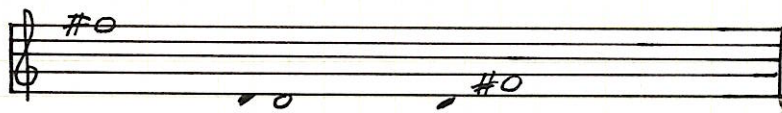
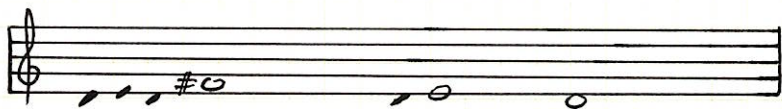


Pine City

#0



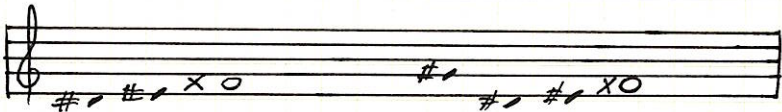
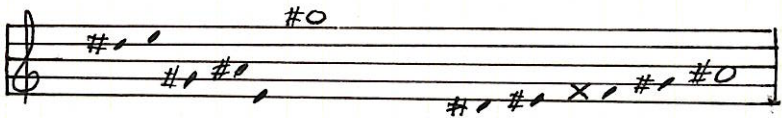
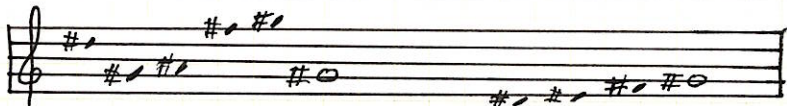
Pleasant Valley



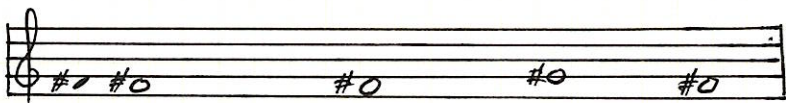
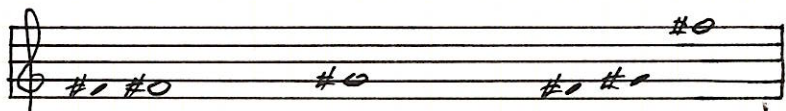
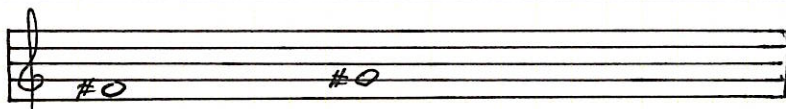
Black Rock

Handwritten musical notation for 'Black Rock' on three staves. The notation is written on a grid background. Each staff begins with a treble clef. The notes and rests are represented by vertical stems and circles. The first staff contains a sequence of five stems, a stem with a circle, and another sequence of five stems. The second staff contains a stem with a sharp sign and a circle, a sequence of four stems, and a stem with a sharp sign and a circle. The third staff contains a stem with a sharp sign and a circle, a stem with a circle, and a sequence of seven stems.

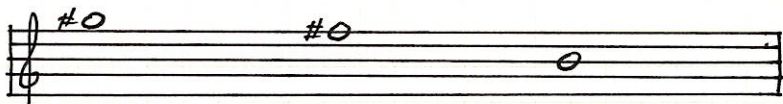
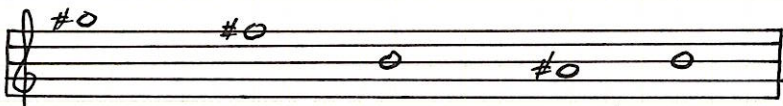
Porcupine Wash



Turkey Flats



Cottonwood Spring



FIELD NOTES®

OUR STORY:

INSPIRED BY the vanishing subgenre of agricultural memo books, ornate pocket ledgers, and the simple, unassuming beauty of a well-crafted grocery list, the Graphic Design Co., Portland, Ore. — in conjunction with Coudal Partners, Chicago, IL — brings you “**FIELD NOTES**” in hopes of offering “An honest memo book worth fillin’ up with **GOOD INFORMATION.**”

JOSHUA TREE NATIONAL PARK

Illustration: The Little Friends of Printmaking (thelittlefriendsofprintmaking.com) with The Fifty-Nine Parks Print Series (59parks.net)

Southwestern California's Joshua Tree National Park — named for its abundance of *Yucca brevifolia* — is one of the youngest parks in the system, receiving national park status from the California Desert Protection Act of 1936. Besides its eponymous “trees,” it's also home to incredible inselberg rock formations jutting out from the desert floor. The park features extreme highs and lows, both in elevation and temperature. Visit in the spring or fall, because summer temperatures can reach 118°F (fortunately, it's a dry heat).

Humans have survived in the Mojave and Colorado Deserts for at least 10,000 years thanks to patches of available water like the Oasis of Mara. More recently, Spaniards arrived, followed by settlers grazing cattle and searching for gold. Then came poachers and ne'er-do-wells who thought nothing of ignoring the serene beauty for a quick buck. Thanks to activist Minerva Hoyt's appreciation of desert plants, President Franklin Roosevelt set aside 825,000 acres to create the park's forerunner, Joshua Tree National Monument, in 1936.

SPECIFICATIONS:

1. Usually printed by the good people of The Graphic Arts Studio LLC, Barrington, Ill.
2. Cover: French Pop Tone 100#C “Grape Jelly,” with a few busy hits of opaque white under process cyan, magenta, yellow, and black soy-based Superior inks.
3. Cover printed in two passes through a Heidelberg Speedmaster CD 1025 10-color printing press.
4. Interior: Finch Paper Opaque Smooth 60#T “Bright White,” with a fine, 1-color application of “Green Earth” soy-based Superior ink.
5. Bound with a Muller Martini 6-pocket saddle stitcher with cover feeder/scorer.
6. Corners rounded to a 3/8" (9.5mm) radius with a Challenge round-corner machine.
7. Graph grid: 3/16" x 3/16" (4.7mm x 4.7mm).
8. Memo book dimensions are 3-1/2" x 5-1/2" (89mm x 140mm).
9. **FIELD NOTES** uses only the Futuro typeface family (Paul Renner, 1927) in its materials.
10. **FIELD NOTES** memo books are printed and manufactured in the U.S.A.

WHAT YOU CAN DO ABOUT IT:

Tell us how you use your **FIELD NOTES**. Please accompany all submissions with a scan or photo of your page, along with a brief description, to: pages@fieldnotesbrand.com.

THE NATIONAL PARKS SERIES
FIELD NOTES × *Fifty-Nine Parks*
fieldnotesbrand.com 59parks.net

PROUDLY PRINTED AND MANUFACTURED IN THE U.S.A. — "A BDC/CP JOINT"